

Charges

All caravan and tent prices cover up to 2 people, use of shower block and Wi-Fi.

Standard pitches with electricity: £15 per night.

Non-electric pitches: £12 per night.

Please note if your departure is on Sunday that Reception is often closed. Please would you make arrangements to pay by the previous day.

Feedback

The site is still under development and we welcome any suggestions about how it might be improved - what new facilities would you most like to see? Please discuss any ideas you may have, or if you prefer, drop us a note.

December 2011

Jim Thomas
Twilite Leisure Park
Phone: 01295 810214
Mobile: 07973 697770
Website: www.twilite-enterprises.com
E-mail: leisure@twilite-enterprises.com

Twilite Leisure Park
Twyford Wharf
Banbury
OX17 3JN

Places to Visit

Within 30 minutes walk (less than two miles)

KING'S SUTTON with shop, railway station (on the Banbury-Marylebone line), post-office, church and 3 pubs

ADDERBURY has a few shops and four pubs

All the local pubs serve food

The Three Tuns in King's Sutton even has a Chinese take-away

Within an hour's towpath walk / four miles by road

The historic market town of BANBURY, famous for its Cross and Cakes. Banbury boasts a canal-side shopping centre and museum at CASTLE QUAY which can be reached directly by towpath

A few minutes walk from Castle Quay is the nearby BOWLING ALLEY

Within 30 minutes drive

BICESTER - market town, home of Bicester Village designer outlet

BLENHEIM PALACE - birthplace of Sir Winston Churchill

THE COTSWOLDS - An area of outstanding natural beauty

OXFORD - The city of dreaming spires

SILVERSTONE - International motor racing circuit

STRATFORD-UPON-AVON - Shakespeare Country

WARWICK - With its historic castle

TWILITE LEISURE LIMITED

Twilite Leisure Park is a trading style of
Twilite Leisure Limited

TWILITE LEISURE LIMITED

*Twilite Leisure
Park*

Your leisure is our business



History



The site in 1960

Shower block 2001

Twilite Leisure Park is situated beside the Oxford Canal three miles south of Banbury. Following the opening of the canal in the late 18th century the site was a thriving pipe and brickworks.

The site was used for farming from around 1940 by the present owner's late father, who also ran the Red Lion public house until it closed in 1954.

The current owner returned to live at Twyford Wharf in 2000 and commenced renovating the site.

Dogs are welcome but please keep on a lead at all times, and clear up any mess. Please remember the whole site is our garden and treat it as you would your own.

No vehicles or caravans on the grass please.

Services Available



Twilite Leisure Park started in 2004 and now has 21 hard-standing pitches for caravans and about half an acre of grass for tents and recreation.

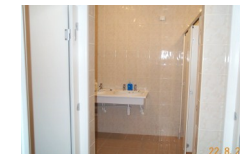
The landscaped garden area is on three levels and provides short walks around the site, with views over the valley to King's Sutton.

Twilite Moorings opened in January 2002 and has a capacity of 5/6 boats. In practice all berths are normally occupied by long-term residential boats.

The bus service to and from Banbury passes the entrance to the site and will stop on request. Timetable on Welcome Board and available at Reception.

Friday night is Fish Night. A local fish and chip van visits the site every Friday evening.

On-site Facilities



Shower block 2009

All facilities described are included in the standard price, there are no hidden extras.

All caravan pitches have electricity hook-ups and there are further hook-ups for tents.

The shower block, which opened in 2009, is unique in that it has been built inside a restored brick kiln.

Despite the age of the building the services are modern and include: toilets, showers, laundry and facilities for the less able.

A Wi-Fi Internet service is available.—the network is called Touring and the password is showerblock

Other facilities include water supply, refuse disposal, portable toilet disposal point. We sell Calor Gas.