

## Charges

Caravan and tent pitches: £12 per night covers up to 2 people. Includes electricity, use of shower block and Wi-Fi.

**Please note** if your departure is on Sunday that Reception is often closed. Please would you make arrangements to pay by the previous day.

## Feedback

The site is still under development and we welcome any suggestions about how it might be improved - what new facilities would you most like to see? Please discuss any ideas you may have, or if you prefer, drop us a note.

August 2010

Jim Thomas  
Twilite Leisure Park  
Phone: 01295 810214  
Mobile: 07973 697770  
Website: [www.twilite-enterprises.com](http://www.twilite-enterprises.com)  
E-mail: [leisure@twilite-enterprises.com](mailto:leisure@twilite-enterprises.com)

Twilite Leisure Park  
Twyford Wharf  
Banbury  
OX17 3JN

## Places to Visit

### Within 30 minutes walk (less than two miles)

KING'S SUTTON with shop, railway station (on the Banbury-Marylebone line), post-office, church and 3 pubs

ADDERBURY has a few shops and four pubs

All the local pubs serve food (see Services Available)

The Three Tuns in King's Sutton even has a Chinese take-away

### Within an hour's towpath walk / four miles by road

The historic market town of BANBURY, famous for its Cross and Cakes. Banbury boasts a canal-side shopping centre and museum at CASTLE QUAY which can be reached directly by towpath

A few minutes walk from Castle Quay is the nearby BOWLING ALLEY

### Within 30 minutes drive

BICESTER - market town, home of Bicester Village designer outlet

BLENHEIM PALACE - birthplace of Sir Winston Churchill

THE COTSWOLDS - An area of outstanding natural beauty

OXFORD - The city of dreaming spires

SILVERSTONE - International motor racing circuit

STRATFORD-UPON-AVON - Shakespeare Country

WARWICK - With its historic castle

**TWILITE LEISURE LIMITED**

Twilite Leisure Park is a trading style of  
Twilite Leisure Limited

**TWILITE LEISURE LIMITED**

*Twilite Leisure  
Park*

*Your leisure is our business*



## History



**The site in 1960**

**Shower block 2001**

Twilite Leisure Park is situated beside the Oxford Canal three miles south of Banbury. Following the opening of the canal in the late 18<sup>th</sup> century the site was a thriving pipe and brickworks.

The site was used for farming from around 1940 by the present owner's late father, who also ran the Red Lion public house until it closed in 1954.

The current owner returned to live at Twyford Wharf in 2000 and commenced renovating the site.

Dogs are welcome but please keep on a lead at all times, and clear up any mess. Please remember the whole site is our garden and treat it as you would your own.

**No vehicles or caravans on the grass please.**

## Services Available



Twilite Leisure Park started in 2004 and now has 21 hard-standing pitches for caravans and about half an acre of grass for tents and recreation.

The landscaped garden area is on three levels and provides short walks around the site, with views over the valley to King's Sutton.

Twilite Moorings opened in January 2002 and has a capacity of 5/6 boats. In practice all berths are normally occupied by long-term residential boats.

### Special Meal Offer at the Butchers Arms



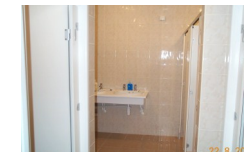
Whittall Street, King's Sutton,  
OX17 3RD

Open all day from 11am  
Food served 12-3 and 6-9

Prop: George and Jayne Hopewell

20% off main meals - just show this leaflet (advisable to book at busy times Phone: 01295 810898).

## On-site Facilities



**Shower block 2009**

All facilities described are included in the standard price, there are no hidden extras.

All caravan pitches have electricity hook-ups and there are further hook-ups for tents.

The shower block, which opened in 2009, is unique in that it has been built inside a restored brick kiln.

Despite the age of the building the services are modern and include: toilets, showers, laundry and facilities for the less able.

A Wi-fi Internet service is available. Other facilities include water supply, refuse disposal, portable toilet disposal point. We sell Calor Gas.

Friday night is Fish Night. A local fish and chip van visits the site every Friday evening.

The bus service to and from Banbury passes the entrance to the site and will stop on request. Timetable on Welcome Board and available at Reception.